

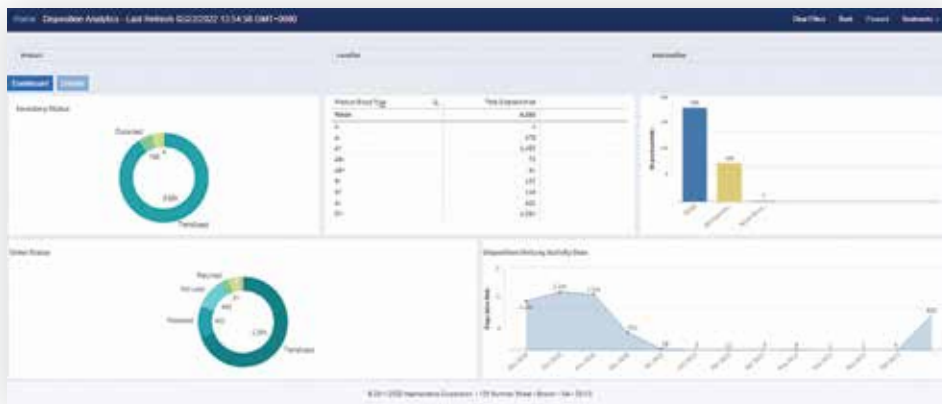
SafeTrace Tx[®] Transfusion Laboratory Information Management System (LIMS)

Created specifically for transfusion laboratories. Built with patient safety in mind.



SafeTrace Tx[®] is a specialised Transfusion LIMS designed to meet the complex needs of transfusion laboratories. The software features:

- Native interface with BloodTrack[®] software for closed-loop transfusion safety
- Extensive safety logic to help protect patients and guard against mistakes
- Intuitive transfusion laboratory-centric workflows that guide next steps
- Complete testing and transfusion history in a single, consolidated record
- Comprehensive 'hub-and-spoke' capabilities that provide efficiencies and continuity of care across Trust locations
- Flexible configurability to meet site specific and Trust needs
- Data visualisation, reporting and analytics
- Proven integration with Cerner[®], Epic[®], and other EPR and LIMS systems



Interactive web-based dashboards dynamically turn data into actionable information.

HAEMONETICS[®]

Transfusion safety across your hospital Trust

Multi-layered, easy-to-enforce safety checks and automated patient/product compatibility testing algorithms help to reduce errors.

The Patient-At-A-Glance Bar® toolbar produces a consolidated patient record with ready access to:

- Special transfusion requirements
- Antibodies
- Transfusion history
- Lab results
- Sample status
- Electronic issue (EI) eligibility

Enhanced data security and privacy

Developed using privacy by design best practices, SafeTrace Tx software provides privacy and auditing tools to support data security compliance programmes.


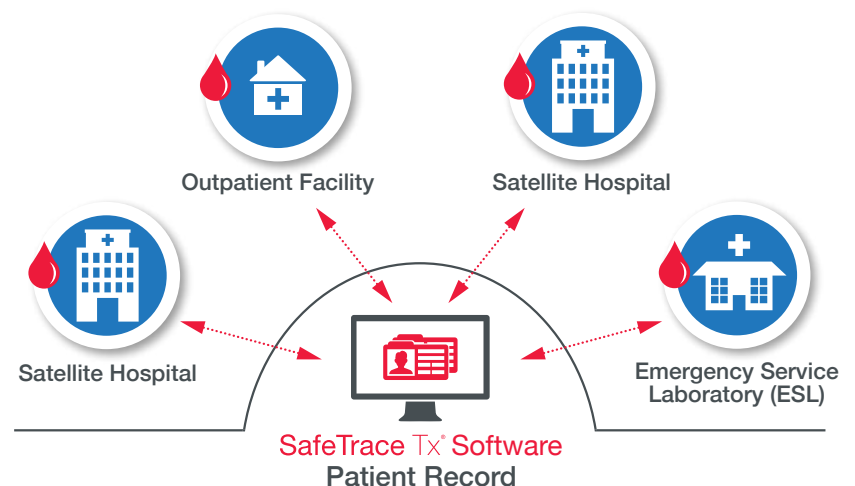
Leveraging modern technologies and using the latest HL7® communication standards makes upgrades and expansions easier and reduces IT oversight.

Full interoperability

Transfusion services interact with many departments within a hospital system. Integration with health IT systems is critical for streamlined workflow and enhanced clinical communications across sites and throughout the care continuum.

Robust interfaces allow seamless data exchange between SafeTrace Tx® software and other systems including:

- EPR
- LIMS
- Test analyzers
- BloodTrack® blood management bedside transfusion software solutions



Support safety, efficiency
and continuity of care with
SafeTrace Tx software.

For more information, call Customer Service at 0808.234.4817, email info.UK@haemonetics.com or contact your Haemonetics Sales Specialist.

For a list of worldwide office locations and contact information, visit <https://www.haemonetics.com/contact-support>

© 2022 Haemonetics Corporation. Haemonetics, BloodTrack, SafeTrace Tx and Patient-At-A-Glance Bar are trademarks or registered trademarks of Haemonetics Corporation in the USA, other countries, or both. All other product names, trademarks and registered trademarks are the property of their respective owners. 04.2022 USA. COL-COPY-001611-GB(AA)